



SCHALTGERÄTE

Komplett-Typen Baureihe ML

Complete types Series ML

Hauptschalter

Bodeneinbau V
Mit Schnappbefestigung auf
Normschiene 35 mm (DIN EN 50022)

Main switches

Base mounting V
Snap-on mounting on DIN rail
EN 50022 standard 35 mm

Verteilereinbau

Mit Schraub- und Schnappbefestigung
auf Normschiene 35 mm (DIN EN
50022) Anschlusschrauben sind vorn
zugänglich

Griff schwarz sw
Frontschild grau gr

Distribution board mounting

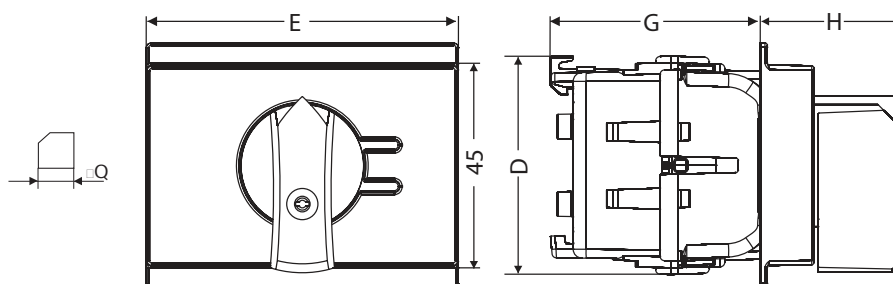
on DIN rail (EN 50022) standard 35 mm terminal
screws are accessible from the front

handle black bk
front plate grey gr

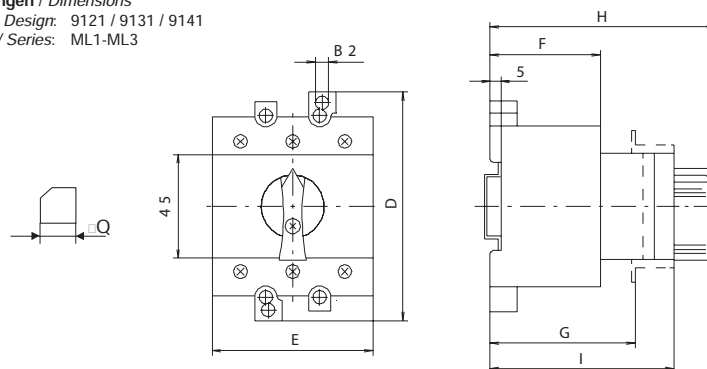


IP 30

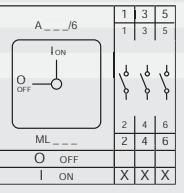
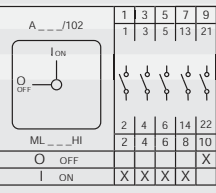
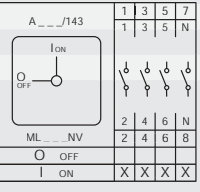
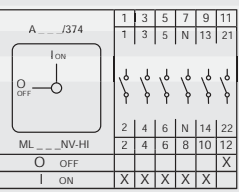
Abmessungen / Dimensions
Bauforn / Design: 9121
Baureihe / Series: MLO



Abmessungen / Dimensions
Bauforn / Design: 9121 / 9131 / 9141
Baureihe / Series: ML1-ML3



Baureihe Series	Abmessungen (mm) Dimensions (mm)								
	B1	B2	D	E	F	G	H	I	Q
MLO	4,5		50	70		45	31		6
ML1	4,5	4,2	78	52,5	42	48,5	91,5	67,5	6
ML2	5,5	5,5	100	53,5	49		100	79	6
ML3	5,5	5,5	100	70	49		100	79	6

Schaltprogramm Contact arrangement	Dauerstrom I_{th} Rated Uninterrupted current I_{th} A	Leistung Rating AC 3 kW	Leistung Rating AC 23A kW	Baureihe Series	Griff/ Frontschild handle/ front plate	Typ Type	Best.Nr. Part #
3-polig 3-pole 	25	7,5	7,5	ML0	sw/gr bk/gr	ML0-016-3V-9121	MZ 57 328
	32	9	9	ML0	sw/gr bk/gr	ML0-032-3V-9121	MZ 59 328
	25	7,5	11	ML1	sw/gr bk/gr	ML1-025-V-9121	MZ 33 058
	40	11	15	ML1	sw/gr bk/gr	ML1-040-V-9121	MZ 35 058
	63	22	30	ML2	sw/gr bk/gr	ML2-063-V-9131	MZ 37 170
	80	30	37	ML2	sw/gr bk/gr	ML2-080-V-9131	MZ 39 170
	125	37	45	ML3	sw/gr bk/gr	ML3-125-V-9141	MZ 41 170
3-polig + 1S + 1Ö 3-pole + 1NC + 1NO 	16	7,5	7,5	ML0	sw/gr bk/gr	ML0-016-3V-9121-HI	MZ 57 390
	32	9	9	ML0	sw/gr bk/gr	ML0-032-3V-9121-HI	MZ 59 390
	25	7,5	11	ML1	sw/gr bk/gr	ML1-025-V-9121-HI	MZ 33 073
	40	11	15	ML1	sw/gr bk/gr	ML1-040-V-9121-HI	MZ 35 073
	63	22	30	ML2	sw/gr bk/gr	ML2-063-V-9131-HI	MZ 37 073
	80	30	37	ML2	sw/gr bk/gr	ML2-080-V-9131-HI	MZ 39 073
	125	37	45	ML3	sw/gr bk/gr	ML3-125-V-9141-HI	MZ 41 073
4-polig 4-pole 	16	7,5	7,5	ML0	sw/gr bk/gr	ML0-016-4V-9121	MZ 57 628
	32	9	9	ML0	sw/gr bk/gr	ML0-032-4V-9121	MZ 59 628
	25	7,5	11	ML1	sw/gr bk/gr	ML1-025-V-9121-NV	MZ 33 062
	40	11	15	ML1	sw/gr bk/gr	ML1-040-V-9121-NV	MZ 35 062
	63	22	30	ML2	sw/gr bk/gr	ML2-063-V-9131-NV	MZ 37 062
	80	30	37	ML2	sw/gr bk/gr	ML2-080-V-9131-NV	MZ 39 062
	125	37	45	ML3	sw/gr bk/gr	ML3-125-V-9141-NV	MZ 41 062
4-polig+ 1S + 1Ö 4-pole + 1NC + 1NO 	16	7,5	7,5	ML0	sw/gr bk/gr	ML0-016-4V-9121-HI	MZ 57 690
	32	9	9	ML0	sw/gr bk/gr	ML0-032-4V-9121-HI	MZ 59 690
	25	7,5	11	ML1	sw/gr bk/gr	ML1-025-V-9121-NV-HI	MZ 33 106
	40	11	15	ML1	sw/gr bk/gr	ML1-040-V-9121-NV-HI	MZ 35 106
	63	22	30	ML2	sw/gr bk/gr	ML2-063-V-9131-NV-HI	MZ 37 106
	80	30	37	ML2	sw/gr bk/gr	ML2-080-V-9131-NV-HI	MZ 39 106
	125	37	45	ML3	sw/gr bk/gr	ML3-125-V-9141-NV-HI	MZ 41 106